

Department of Engineering
Tim Bryan, P.E., County Engineer

3137 South Liberty Street, Canton, MS 39046
Office (601) 790-2525 FAX (601) 859-3430

MEMORANDUM

November 9, 2021

To: Sheila Jones, Supervisor, District I
Trey Baxter, Supervisor, District II
Gerald Steen, Supervisor, District III
Karl Banks, Supervisor, District IV
Paul Griffin, Supervisor, District V

From: Tim Bryan, P.E., PTOE
County Engineer

Re: Adjustment of Entergy Distribution Facilities
Highway 22 and King Ranch Road in Canton
Madison County-Project STP-0024-00(055)LPA/108165-701000

The Engineering Department requests the Board approve the attached agreement for the adjustment of Entergy Distribution Facilities at intersection of Highway 22 at King Ranch Road that are in conflict with the intersection upgrades. The cost for these adjustments is \$24,311.01 and are the county's responsibility as they are currently located off of public right-of-way.



Entergy Mississippi, LLC.
1165 Hwy 51 North
Madison, MS 39110

August 18, 2021

Madison County
Attention: Mr. Karl Banks, President
125 West North St.
P.O. Box 608
Canton, MS 39046

Re: Adjustment of Entergy Distribution Facilities
For Adding Turn Lane at the Intersection of Hwy 22 and Kings Ranch Rd. in Canton,
Madison County (Project STP – 0024-00(055)LPA/108165-701000)

Dear Mr. Banks:

Enclosed are duplicate originals of a Utility Agreement covering the adjustment of Entergy's distribution facilities on the above-referenced county project. Please process this agreement for approval by Madison County and return an executed copy for our files.

Please let me know if additional information is needed.

Sincerely,

A handwritten signature in blue ink that reads "mef 700".

Mike Farrell
Design Supervisor – Central Region/Large Projects
Entergy Mississippi, LLC
601-853-5911

Enclosures

LUMP SUM UTILITY AGREEMENT

COUNTY PROJECT – MADISON COUNTY – TURN LANE ADDITION IMPROVEMENTS
INT. HWY 22 and KINGS RANCH RD. IN CANTON
PROJECT # STP-0024-00(055)LPA/108165-701000
Madison County, Mississippi

WO#12330196 / CEA#C6MD302325

AGREEMENT BETWEEN ENTERGY MISSISSIPPI, LLC, AND THE BOARD OF SUPERVISORS OF MADISON COUNTY, FOR THE RELOCATION AND/OR REARRANGING OF ELECTRICAL DISTRIBUTION FACILITIES OF ENTERGY MISSISSIPPI, LLC, NECESSITATED BY THE ADDITION OF A TURN LANE AT THE INTERSECTON OF HWY 22 AND KINGS RANCH RD. IN CANTON, MISSISSIPPI.

Entergy Mississippi, LLC, hereinafter referred to as the Company, and the President of the Board of Supervisors, Madison County, acting for and on behalf of Madison County, Mississippi, hereinafter referred to as the County, hereby agree as follows:

1. The County will submit a Project for construction, being known as Turn Lane Addition - Project # STP-0024-(055)LPA/108165-701000.
2. Due to the construction of this project, certain relocation and/or rearrangements of the existing pole line facilities of the Company, located on private right of way, will have to be made.
3. The Company will construct the most economical type of lines in the new location as will satisfactorily meet the same service requirements of the old lines in the old location.
4. The Company will make the necessary adjustment in its pole line facilities necessitated by the proposed construction for a lump-sum, fixed-price payment of Twenty-Four Thousand Three Hundred Eleven Dollars and 01 Cents (\$24,311.01) without later confirmation of actual costs. A cost estimate and adjustment plans are attached hereto and made a part hereof.
5. In lieu of reimbursement for actual costs, said lump-sum payment will be the total amount due from the County as full reimbursement and compensation to Company for the work performed under this agreement.
6. The County will remit payment to the Company in a timely manner after receipt of the of a billing statement.

This the 7th day of September, 2021.

MADISON COUNTY, MISSISSIPPI

By: _____
President, Board of Supervisors

ENTERGY MISSISSIPPI, LLC

By: _____
Senior Manager, Engineering

STG

Attest:

Clerk, Board of Supervisors

(SEAL)

**ADJUSTMENT OF ENTERGY DISTRIBUTION FACILITIES
ADD TURN LANE AT INT. OF HWY 22/KINGS RANCH ROAD,
MADISON COUNTY**

**PROJECT NUMBER STP-0024-00(055)LPA/108165701000
WO# 12330196 CEA# C6MD302325**

LUMP SUM COST

SUMMARY OF COST

DIS NUMBER	ITEM	SUBTOTAL AMOUNT
1.	Material	\$ 7,477.13
2.	Labor	\$ 7,828.91
3.	Equipment and Corporate Overhead	\$ <u>9,004.97</u>
TOTAL COST OF JOB		\$ 24,311.01
TOTAL COST TO MADISON COUNTY IS 100%		\$ 24,311.01
TOTAL COST TO ENTERGY MISSISSIPPI IS 0%		0.00



CUE Estimate - Job Cost Summary

Estimate Version: 2

Estimate Request: 12330196 Created from Work Order 12330196

Work Site: DIST

Master WO: 12330196

2021-MADISON-GT04-RELOCATE (2) POLES FOR NEW ROAD TURN LANE

Estimate Version: 2

At: 5:43:04 PM

Estimated On: 6/23/21

Request Type: JOB

Commit Date: Aug 13, 2021, 12:20 PM

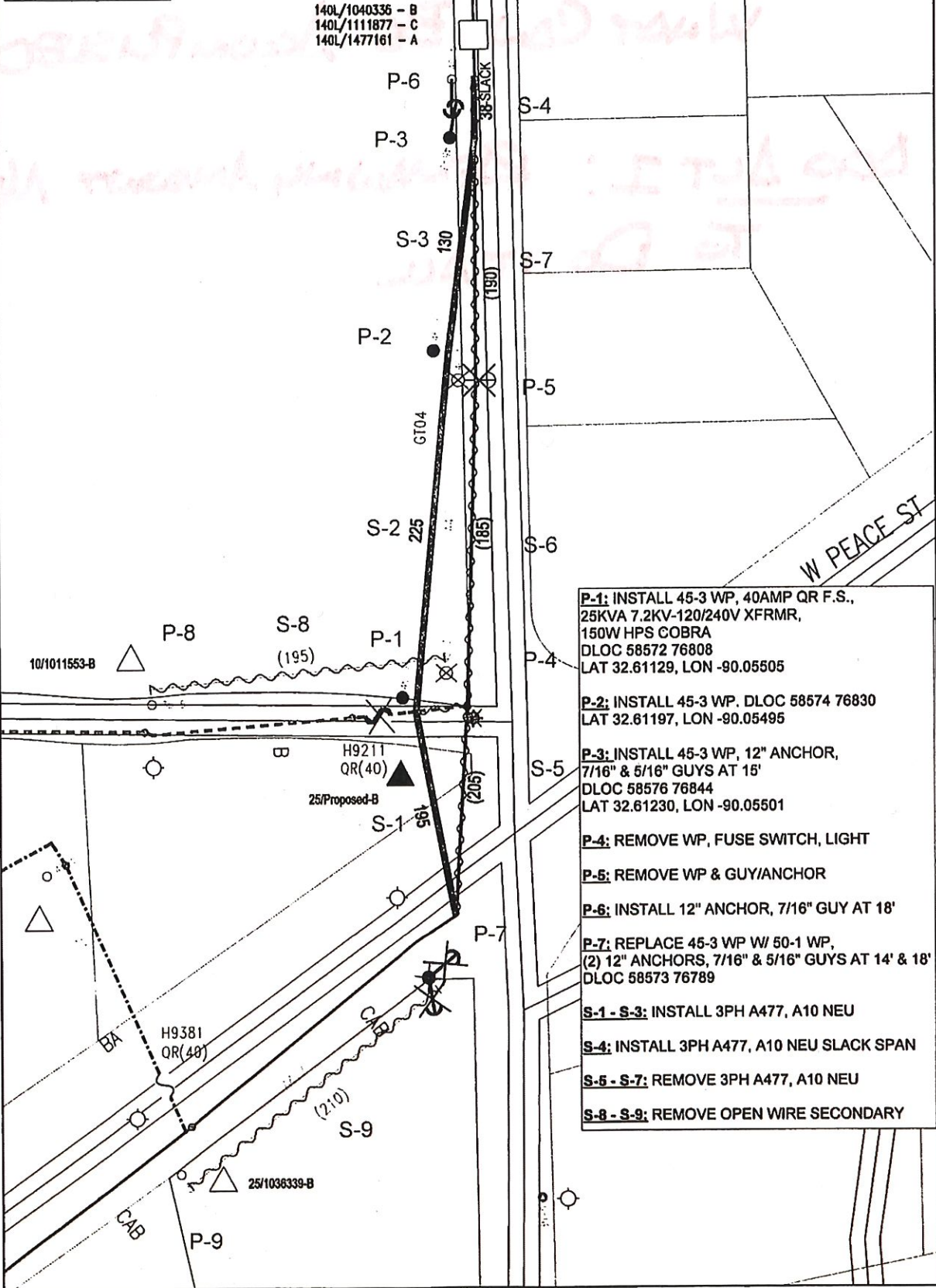
Estimate Type: DESIGN

By: MXINTADM

Station	Param: Set	Hot / Cold	Inaccessible	Labor Rate	Condition	Factor	Account Override
Labor Hours							
				Inside +	Outside =		Total
				139.63	0.00		139.63
				Labor Hours - On Site:			
				34.89			34.89
				Labor Hours - Off Site:			
				= Total Labor Hours:	0.00		174.52
Costs							
				Inside +	Outside =		Total
				7,828.91	0.00		7,828.91
				Labor Cost:			
				+ Services Cost:	0.00		0.00
				+ Tools Cost:	0.00		0.00
				= Total Labor, Services & Tools Cost:	0.00		7,828.91
				New Material Cost:	7,750.95		7,750.95
				Less Salvage:	-273.82		-273.82
				= Total Material Cost:	7,477.13		7,477.13
				Total Overheads:			9,004.97
				Total Gross Cost:			24,311.01
				Less Applied Contributions:			0.00
				Total Net Cost:			24,311.01
				Plus Total Deferred Cost:			0.00
				Total Estimate Cost:			24,311.01

Entergy	WO Title: 2021-MADISON-GT04-RELOCATE (2) POLES FOR NEW ROAD TURN LANE		WO: 12330196	Rev#: 2
	Address: KING RANCH RD. AT PEACE ST. CANTON		Work Order ID: 12330196	
Local Office: 9050	Cust Name: MADISON COUNTY	County/Parish: Madison	Date: 06/23/21	ARC Flash:
Tax Dist:	Cust Svc Entrance Size:	Latitude:	Designer: dschnei	
WO Type: HIGHWAY		Longitude:	Sub: CANTON-SOUTH	Phase: ABC
Acct#:	SO#:	PAL SO#:	Circuit Blr ID: GT04	Page:
Phone#: 801-405-7880	VCAP #:	Scale 1"=59'		
Contact Person: BRAD ENGELS	One Call #:			

UPSTREAM DEVICE:
CANTON-SOUTH SUB.



- P-1:** INSTALL 45-3 WP, 40AMP QR F.S., 25KVA 7.2KV-120/240V XFRMR, 150W HPS COBRA DLOC 58572 76808 LAT 32.61129, LON -90.05505
- P-2:** INSTALL 45-3 WP. DLOC 58574 76830 LAT 32.61197, LON -90.05495
- P-3:** INSTALL 45-3 WP, 12" ANCHOR, 7/16" & 5/16" GUYS AT 15' DLOC 58576 76844 LAT 32.61230, LON -90.05501
- P-4:** REMOVE WP, FUSE SWITCH, LIGHT
- P-5:** REMOVE WP & GUY/ANCHOR
- P-6:** INSTALL 12" ANCHOR, 7/16" GUY AT 18'
- P-7:** REPLACE 45-3 WP W/ 50-1 WP, (2) 12" ANCHORS, 7/16" & 5/16" GUYS AT 14' & 18' DLOC 58573 76789
- S-1 - S-3:** INSTALL 3PH A477, A10 NEU
- S-4:** INSTALL 3PH A477, A10 NEU SLACK SPAN
- S-5 - S-7:** REMOVE 3PH A477, A10 NEU
- S-8 - S-9:** REMOVE OPEN WIRE SECONDARY